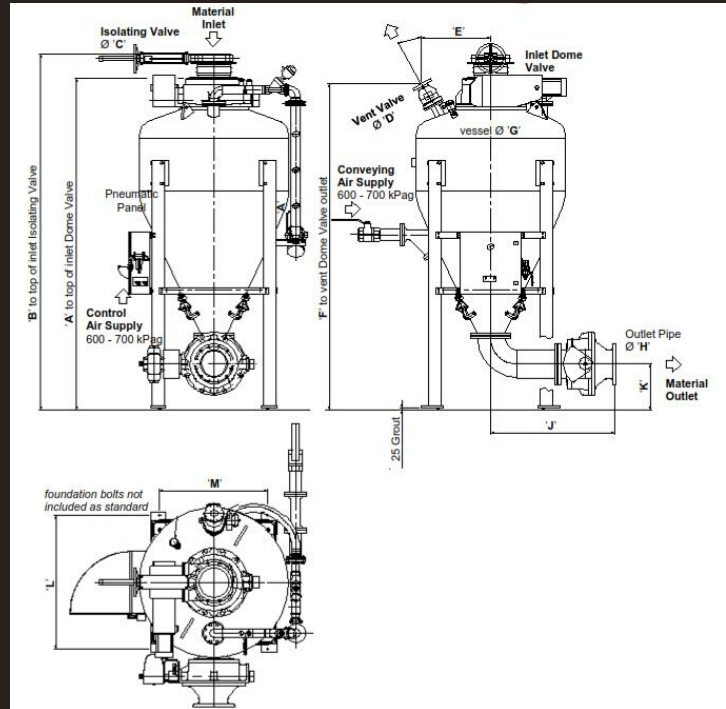




Pneumatic Conveying



Physical Layout



Technical Data PD-PUMP

Pneumatic Bulk Solids Handling
Document No. CPC-TDS-3030

Main Dimensions

PD-Pump Model Size	'A'	'B'	Ø 'C'	Ø 'D'	'E'	'F'	Ø 'G'	Ø 'H'	'J'	'K'	'L'	'M'	Approx Net Weight
3/4/2	1131	1354	100	3/4"	200	1137	532	50	440	250	190	171	230 kg
8/8/3		1692	200	50	505	1493	854	80	600	192	690	530	550 kg
12/8/4	1734		200	50	505	1751	854	100	710	224			700 kg
20/12/5	2176	2446	300	80	607	2132	1003	125	853	400	341	340	1150 kg
30/12/6	2587	2857	300	80	607	2534	1003	150	853	400	341	340	1431 kg
50/12/8	2925	3195	300	80	620	2876	1163	200	988	503	417	405	1800 kg
70/12/10		3476	300	80	675	3193	1466	250	1222	451	1307	1057	2600 kg
100/12/12	3695	3965	300	80	662	3646	1466	300	1335	665	417	514	2250 kg

Address

Clyde Pneumatic Conveying Ltd
Lakeside Boulevard
Lakeside
Doncaster
DN5 4PL
United Kingdom

Phone

+44 01302 552200

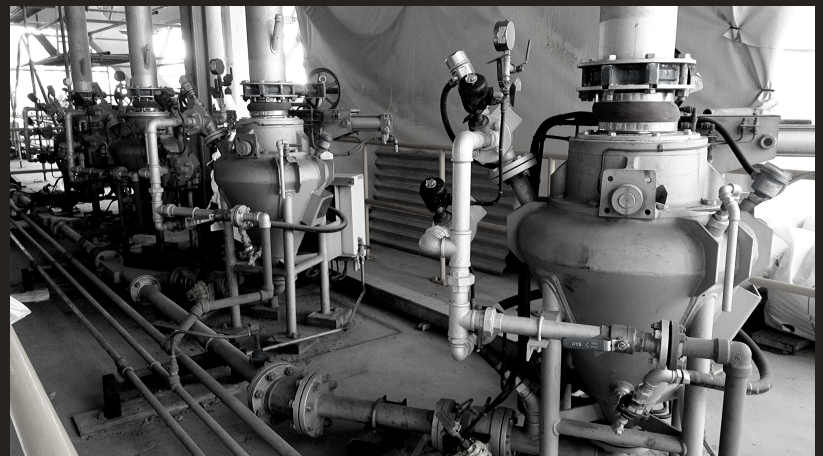
Email

sales@clydepc.co.uk

Web

www.clydepc.co.uk

Typical Installation



ISO9001 | ISO14001



British Engineering